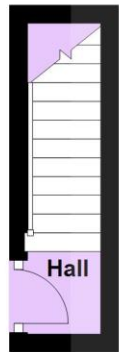
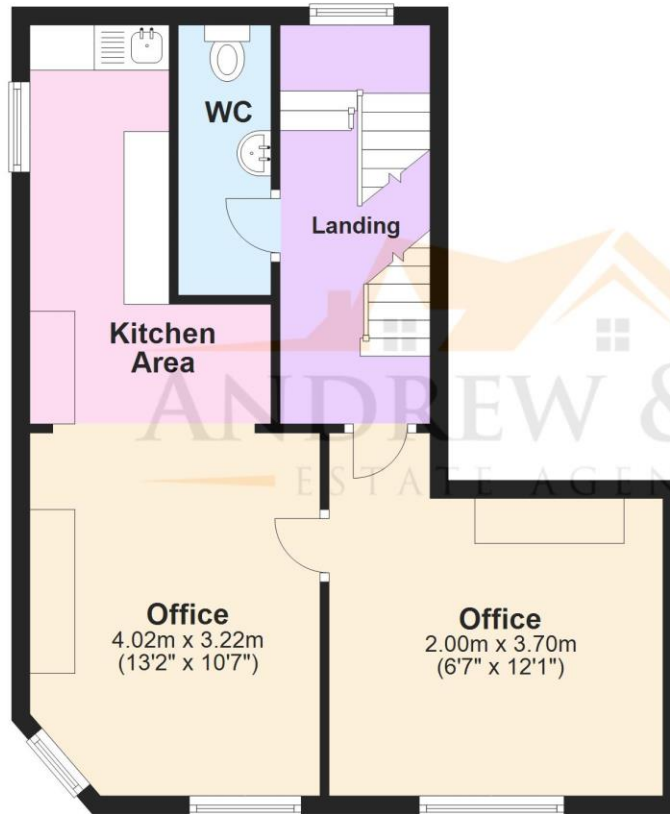


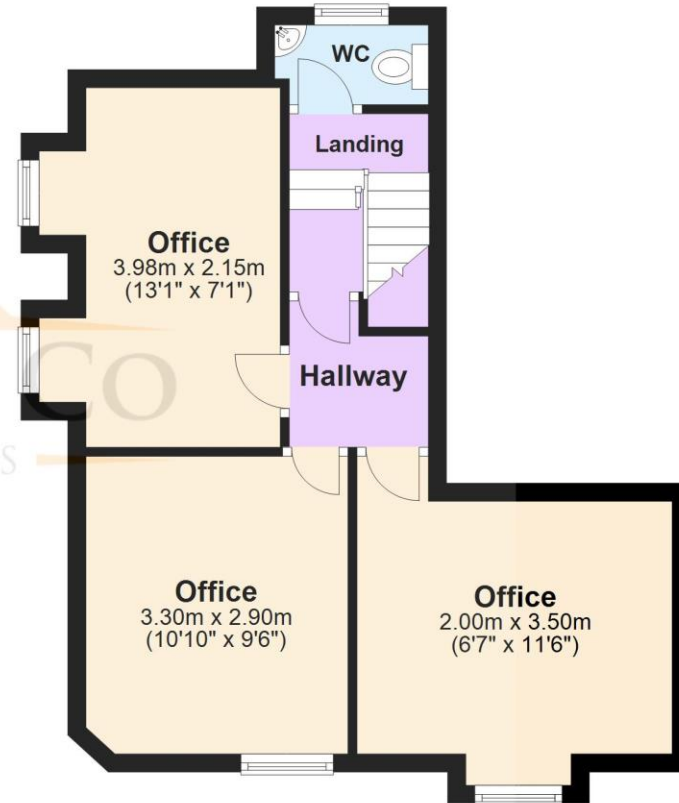
**First Floor**  
Approx. 2.8 sq. metres (30.0 sq. feet)



**Second Floor**  
Approx. 46.4 sq. metres (499.4 sq. feet)



**Third Floor**  
Approx. 37.3 sq. metres (401.8 sq. feet)



**Total area: approx. 86.5 sq. metres (931.3 sq. feet)**

Plans are for layout purposes only and not drawn to scale, with any doors, windows and other internal features merely intended as a guide.  
Plan produced using PlanUp.