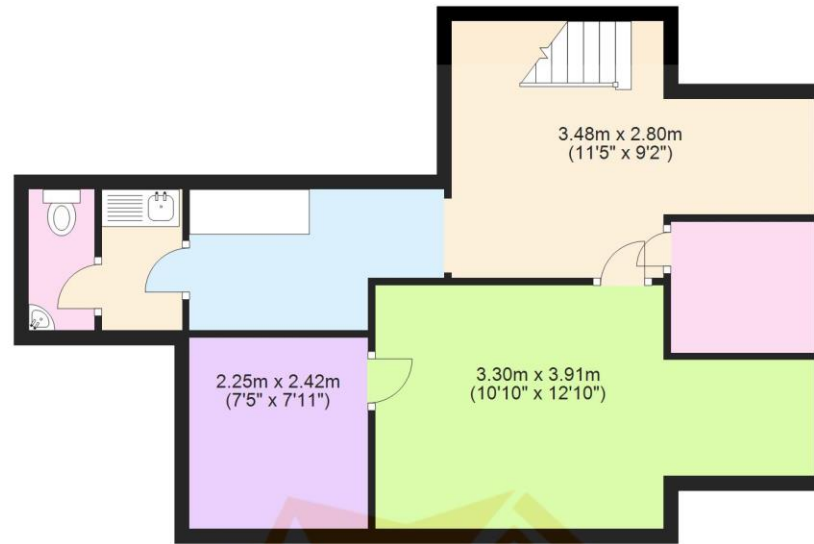


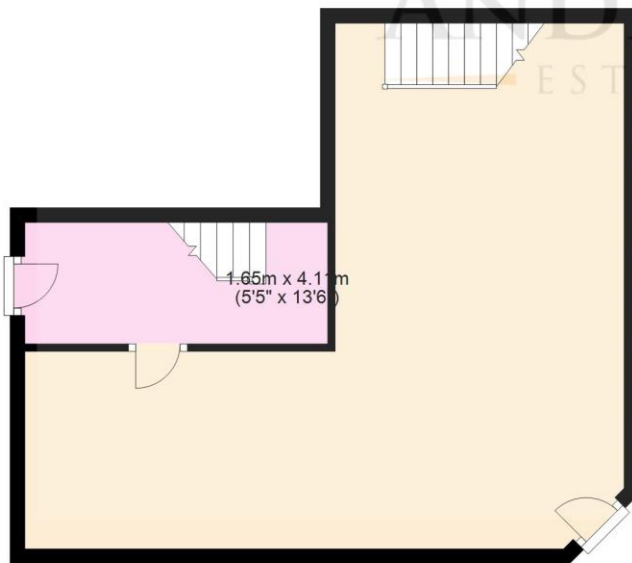
Basement

Approx. 47.0 sq. metres (505.4 sq. feet)



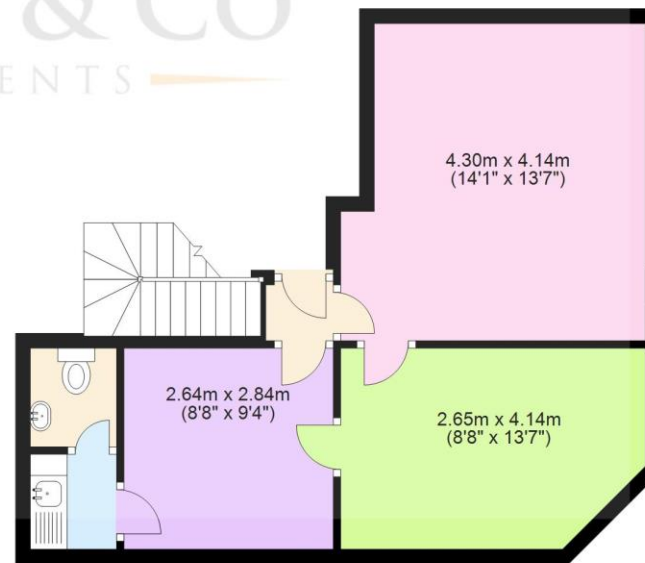
Ground Floor

Approx. 46.3 sq. metres (497.8 sq. feet)



First Floor

Approx. 39.1 sq. metres (420.6 sq. feet)



Total area: approx. 132.3 sq. metres (1423.9 sq. feet)

Plans are for layout purposes only and not drawn to scale, with any doors, windows and other internal features merely intended as a guide. Copyright WarnerGray.
Plan produced using PlanUp.